



*Up-to-date Questions and Answers from authentic resources to improve knowledge and pass the exam at very first attempt. ----- Guaranteed.*



4A0-C02 Dumps  
4A0-C02 Braindumps  
4A0-C02 Real Questions  
4A0-C02 Practice Test  
4A0-C02 Actual Questions



[killexams.com](https://killexams.com)

**Nokia**

**4A0-C02**

*Okia SRA Composite*

ORDER FULL VERSION

<https://killexams.com/pass4sure/exam-detail/4A0-C02>



Question: 190

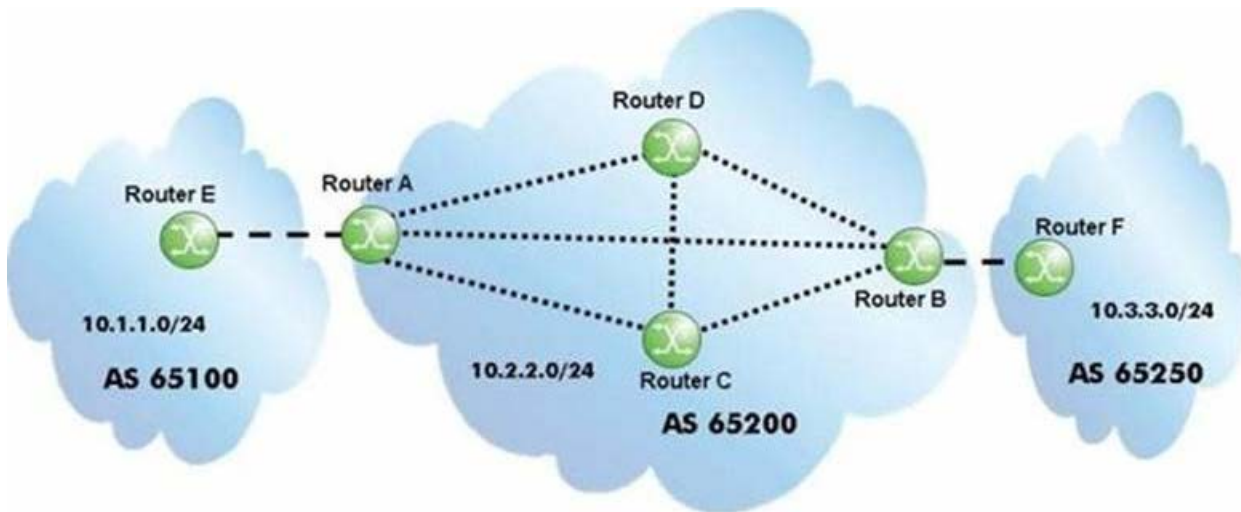
Which of the following commands would correctly configure the confederation AS number as 65200 with a member AS of 65202?

- A. config>router- confederation 65200 members 65202  
B. config>router>bgp= confederation 65200 members 65202  
C. config>router= confederation 65202 members 65200  
D. config>router>bgp= confederation 65202 members 65200

**Answer: A**

Question: 191

Click the exhibit.



Over which BGP session will router B learn the 10.1.1.0/24 prefix?

- A. The session between router A and router  
C. The session between router C and router  
E. The session between router D and router  
G. Router B will learn the prefix over all of the sessions, then it will choose the best route.

**Answer:** A

Question: 192

Which of the following statements regarding BGP Add-Paths is FALSE?

- A. Add-Paths allows non-best paths to be advertised to a peer.
- B. Add-Paths capabilities are exchanged between peers after the BGP session is established.
- C. A BGP speaker must advertise the capability to receive multiple paths from its peer.
- D. A BGP speaker must advertise the capability to send multiple paths to its peer.

**Answer:** B

**Question:** 193

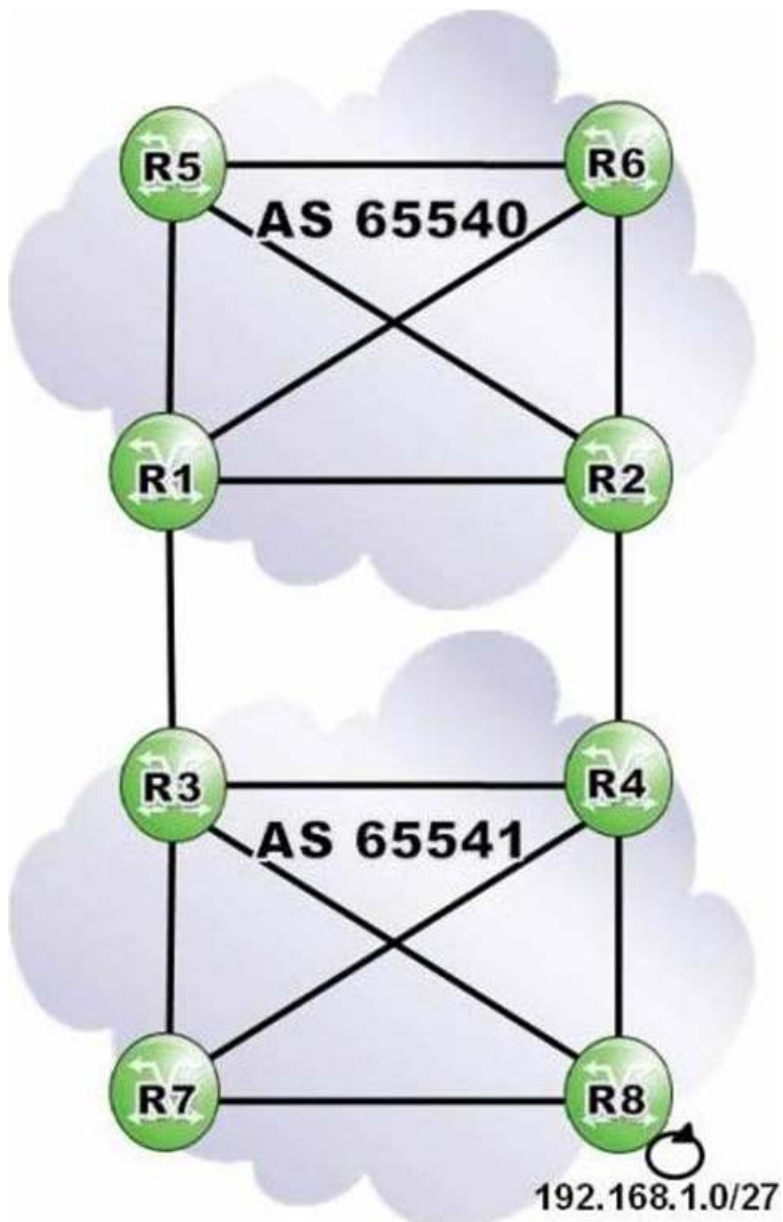
Which of the following regarding the TTL of a BGP message is TRUE?

- A. TTL is a well-known mandatory BGP attribute.
- B. The default TTL value of an eBGP message is 1, and 64 for an iBGP message.
- C. The default TTL value of an iBGP message can be modified using the multihop command.
- D. The default TTL value of an eBGP message can be modified using the "ttl-security" command.

**Answer:** B

**Question:** 194

Click the exhibit.



Router R2 receives a route to 192.168.1.0/27 from router R4, and sets the local preference to 110. Router R1 receives a route to 192.168.1.0/27 from router R3, and sets the local preference to 80. Both ASs have a full iBGP mesh.

What path does traffic destined to 192.168.1.0/27 take from router R1?

- A. R1-R3-R8
- B. R1-R2-R4-R8
- C. R1-R3-R4-R8
- D. R1-R2-R4-R3-R8

**Answer:** B

**Question:** 195

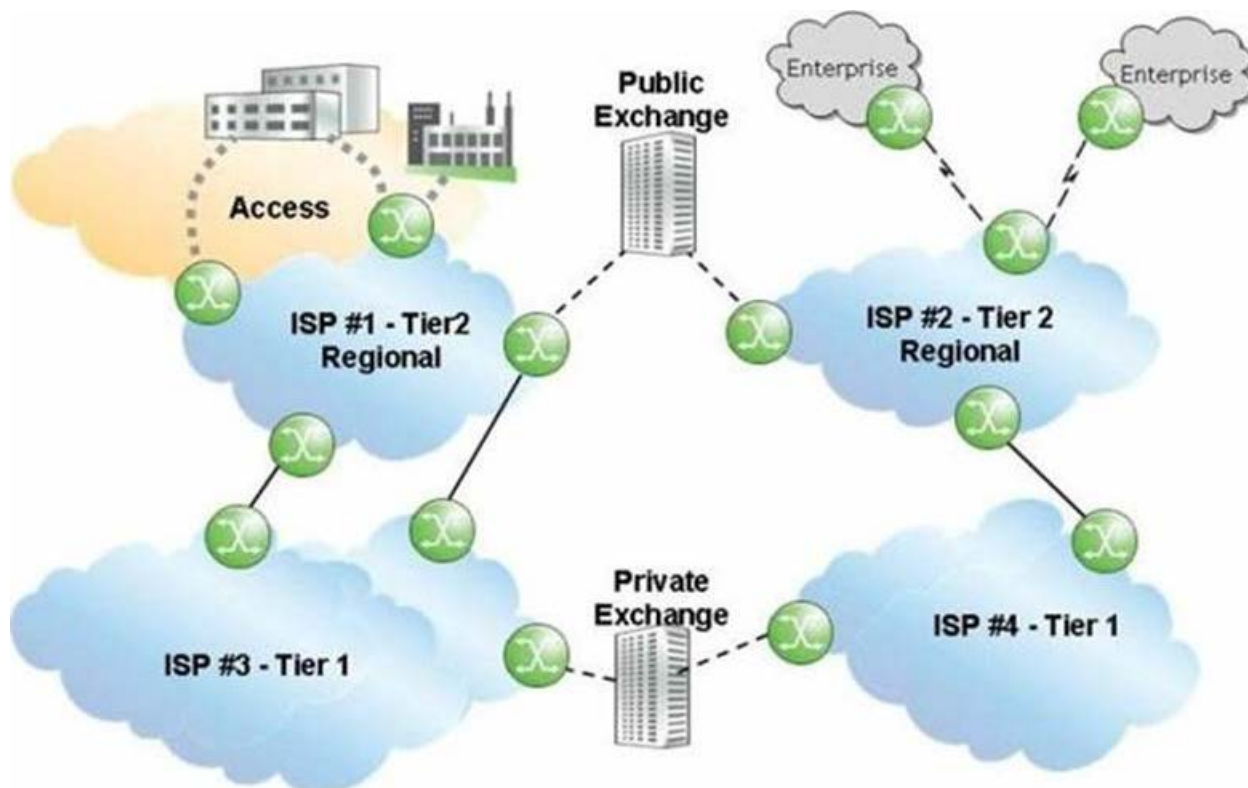
What class of attribute is Originator\_ID?

- A. Well-known mandatory.
- B. Well-known discretionary.
- C. Optional transitive.
- D. Optional non-transitive.

**Answer:** D

**Question:** 196

Click the exhibit.



Given that ISP 1 and ISP 2 are Tier 2 providers, and that ISP 3 and ISP 4 are Tier 1 providers, what is the most likely relationship between ISP 1 and the other ISPs?

- A. ISP 1 has a peering relationship with ISP 2 and ISP 4.
- B. ISP 1 has a peering relationship with ISP 2 and a transit relationship with ISP 3.
- C. ISP 1 has a peering relationship with ISP 2 and ISP 3.
- D. ISP 1 has a transit relationship with ISP 2 and ISP 4.
- E. ISP 1 has a transit relationship with ISP 2 and a peering relationship with ISP 3.

**Answer:** B

### Question: 197

Which of the following best describes the purpose of advertise-external?

- A. It enables a BGP speaker to advertise multiple external routes to iBGP peers.
- B. It enables a BGP speaker to advertise its best external route to iBGP peers when the best overall route is internal.
- C. It enables a BGP speaker to advertise its best external route to eBGP peers without an import policy.
- D. It enables a BGP speaker to advertise its best internal route to eBGP peers without an export policy.

**Answer:** B

### Question: 198

Assuming that "client1" and "client2" are directly-connected networks, what is the result of executing the following BGP policy?

```

entry 10
  from
    protocol direct
  exit
  action accept
    community add "West"
  exit
exit
entry 20
  from
    prefix-list "client1"
  exit
  action accept
    community add "North"
  exit
exit
entry 30
  from
    prefix-list "client2"
  exit
  action accept
    community add "South"
  exit
exit
default-action reject

```

- A. "client2" routes will be tagged with communities "West" and "North".
- B. "client2" routes will be tagged with communities "West", "North" and "South".
- C. "client2" routes will be tagged with community "West".
- D. "client2" routes will be tagged with community "South".

**Answer:** C

**Question:** 199

Which of the following organizations would an ISP based in Europe approach for an IP prefix assignment?

- A. ARIN
- B. ICANN
- C. RIPE NCC
- D. LACNIC
- E. APNIC

**Answer:** C

**Question:** 200

Which of the following regarding BGP confederations is FALSE?

- A. A confederation is a collection of Autonomous Systems advertised as a single AS number to BGP speakers outside the confederation.
- B. Each member AS must either maintain a full mesh of iBGP sessions, or use route reflection.
- C. Confederations can be used to subdivide ASs that have a large number of BGP speakers into smaller domains.
- D. A full mesh of intra-confederation eBGP sessions is required between the member ASs.

**Answer:** D



# SAMPLE QUESTIONS



*These questions are for demo purpose only. **Full version** is up to date and contains actual questions and answers.*

*Killexams.com is an online platform that offers a wide range of services related to certification exam preparation. The platform provides actual questions, exam dumps, and practice tests to help individuals prepare for various certification exams with confidence. Here are some key features and services offered by Killexams.com:*



**Actual Exam Questions:** *Killexams.com provides actual exam questions that are experienced in test centers. These questions are updated regularly to ensure they are up-to-date and relevant to the latest exam syllabus. By studying these actual questions, candidates can familiarize themselves with the content and format of the real exam.*

**Exam Dumps:** *Killexams.com offers exam dumps in PDF format. These dumps contain a comprehensive collection of questions and answers that cover the exam topics. By using these dumps, candidates can enhance their knowledge and improve their chances of success in the certification exam.*

**Practice Tests:** *Killexams.com provides practice tests through their desktop VCE exam simulator and online test engine. These practice tests simulate the real exam environment and help candidates assess their readiness for the actual exam. The practice tests cover a wide range of questions and enable candidates to identify their strengths and weaknesses.*

**Guaranteed Success:** *Killexams.com offers a success guarantee with their exam dumps. They claim that by using their materials, candidates will pass their exams on the first attempt or they will refund the purchase price. This guarantee provides assurance and confidence to individuals preparing for certification exams.*

**Updated Content:** *Killexams.com regularly updates its question bank and exam dumps to ensure that they are current and reflect the latest changes in the exam syllabus. This helps candidates stay up-to-date with the exam content and increases their chances of success.*

**Technical Support:** *Killexams.com provides free 24x7 technical support to assist candidates with any queries or issues they may encounter while using their services. Their certified experts are available to provide guidance and help candidates throughout their exam preparation journey.*

For More exams visit <https://killexams.com/vendors-exam-list>  
*Kill your exam at First Attempt....Guaranteed!*