



Up-to-date Questions and Answers from authentic resources to improve knowledge and pass the exam at very first attempt. ----- Guaranteed.



4H0-200 Dumps
4H0-200 Braindumps
4H0-200 Real Questions
4H0-200 Practice Test
4H0-200 Actual Questions



killexams.com

Hyperion

4H0-200

Hyperion Enterprise 5 Certification

ORDER FULL VERSION

<https://killexams.com/pass4sure/exam-detail/4H0-200>



Answer: B

Question: 128

Which function allows you to write to an Enterprise database?

- A. HPHEA
- B. HPLNK
- C. HPWRI
- D. HPVAL

Answer: B

Question: 129

Which Point-of-View menu permanently alters a Point-of-View within a book?

- A. Edit, Point-of-View
- B. Edit, Insert Section
- C. Edit, Insert Change
- D. Edit, Formula-Dimension Expressions

Answer: C

Question: 130

Which two statements about Compound Reports are true? (Choose two.)

- A. Compound Reports can be used in Hyperion Schedules.
- B. The Compound Report template can be modified by using View ?Layout.
- C. With the correct Compound Report template, up to six reports can appear on the same page.
- D. All embedded reports must have columns and rows defined before the report can be generated.

Answer: B, D

Question: 131

Which two functions can produce a report that includes only Elimination entities? (Choose two.)

- A. @ELM
- B. @ALL(ELIM)
- C. A Fixed Name List
- D. A Dynamic Name List

Answer: C, D

Question: 132

A cell containing an HPVAL formula in a Hyperion Retrieve worksheet returns a "#VALUE". What could cause this condition? (Choose two.)

- A. It has an invalid dimension label.
- B. The RHXLL32.DLL file is missing.
- C. It has an incorrect order of arguments.
- D. The system cannot find a valid HPAPP.DAT file.

Answer: A, C

Question: 133

To combine data from two or more Enterprise applications on a single report, what Retrieve or Reporting features are used to retrieve data?

- A. Retrieve, HPLNK function
- B. Retrieve, HPVAL function
- C. Reporting, Compound Reports
- D. Reporting, Standard Report w/ @APP function

Answer: B

Question: 134

Which two Financial functions use the Account attribute defined in the Enterprise application? (Choose two.)

- A. BET
- B. CHG
- C. PBE
- D. PCT

Answer: A, C

Question: 135

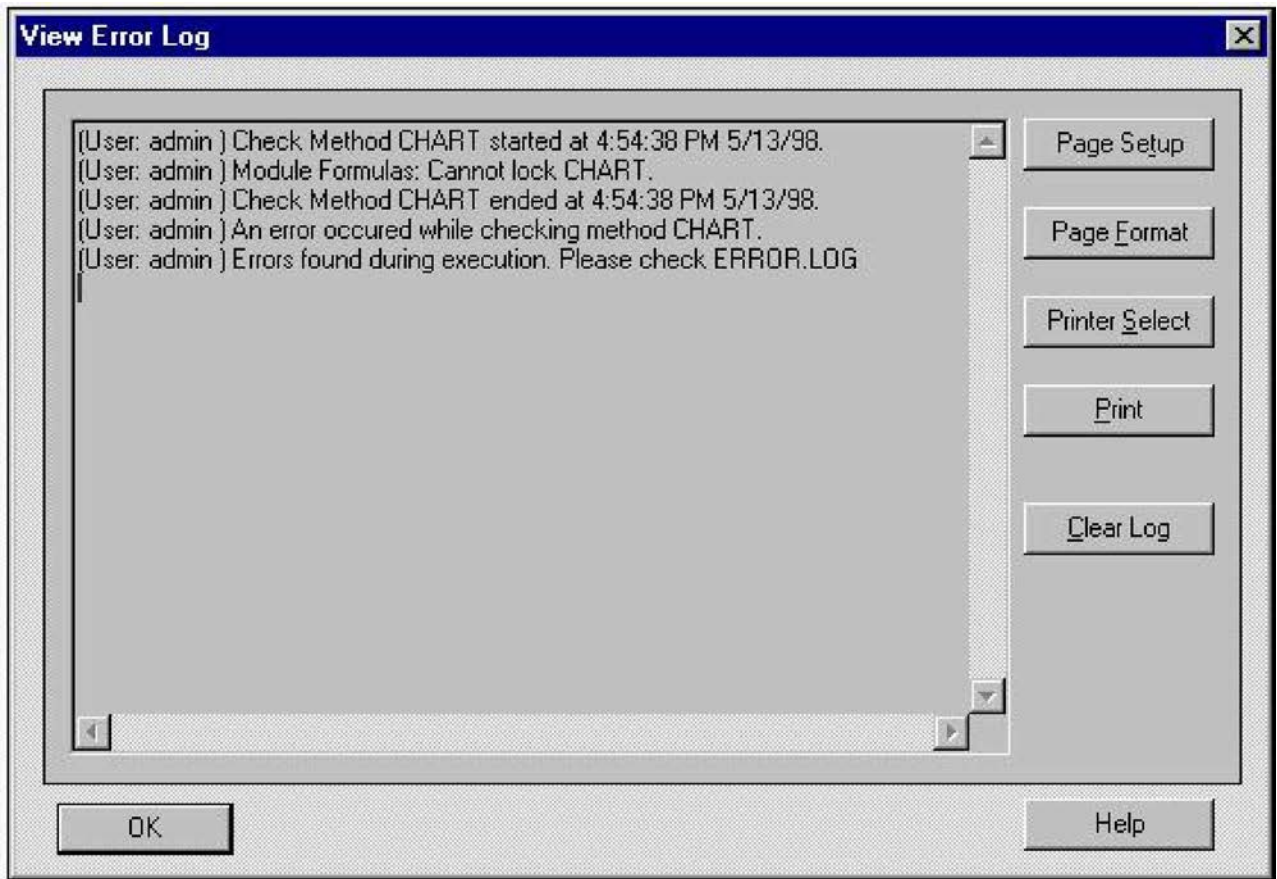
When designing a Variance report comparing Actual to Budget to Lastyr, which dynamic Period fuction produces the correct result for all three categories?

- A. @CMO
- B. @CUR
- C. @DAT
- D. @PER

Answer: A

Question: 136

Click the Exhibit button. A user checks the CHART method in an Enterprise application and receives the error displayed in the Error Log in the exhibit. What caused the error?



- A. Someone else has CHART open.
- B. There are no formulas in CHART.
- C. There are invalid formulas in CHART.
- D. The user does not have security access to CHART.

Answer: A

Question: 137

Where can ACE methods be maintained? (Choose two)

- A. Within a text file
- B. Within the ACE Admin utility
- C. Within the CHARTDSM method
- D. Within the Task menu option in the Formulas module

Answer: A, B

Question: 138

Which default Enterprise method is appropriate to contain the override of the application defaults for currency conversions?

- A. TRANS
- B. CONSOL
- C. CHARTDSM
- D. DYNVIEWACCTS

Answer: A

Question: 139

Which function provides the periodic value?

- A. PER
- B. PRD
- C. PRE
- D. PVA

Answer: B

Question: 140

How should the flags be set for the historical common stock account to correctly reflect the value of common stock at the translated level? (Choose two.)

- A. Currency Flag on
- B. Currency Flag off
- C. Consolidate Flag on
- D. Consolidate Flag off

Answer: B, C

Question: 141

A client makes a change to the default CHART method, saves, and successfully checks it. Which two statements about the consolidation status flags are true? (Choose two.)

- A. OK entities will change to LOGIC

- B. OK base entities will change to CALC
- C. LOCKED entities will change to CALC
- D. OK parent entities will change to IMPACTED

Answer: B, D

Question: 142

Click the Exhibit button. Given the Method File, the Data Entry screen, and the account attributes in the exhibits, what is the value after executing logic in the account NETINCOME?

```

!
!   Chart of Accounts logic for all input entities
!
!
[CATEGORY=ALL]

#GM=SUB(#GRSALES)           ! Subtotal from Gross Sales

#TOTEXP=SUB(#MKTEXP)        ! Subtotal from Marketing Expense

#OPINCOME=SUB(#GM)          ! Subtotal from Gross Margin

#PRETAX=SUB(#OPINCOME)      ! Subtotal from Operating Income

#NETINCOME=SUB(#PRETAX)     ! Subtotal from Pretax

```

GRSALES	12000
COSTGDS	7000
GM	0
MKTEXP	1000
RDEXP	
GAEXP	1500
OPEXP	0
TOTEXP	0
OPINCOME	0
INTEREST	500
TRANS	200
PRETAX	0
TAXES	1200
NETINCOME	0

<u>ACCOUNT</u>	<u>ATTRIBUTE</u>
GRSALES	INCOME
COSTGDS	EXPENSE
GM	INCOME
MKTEXP	EXPENSE
RDEXP	EXPENSE
GAEXP	EXPENSE
OPEXP	EXPENSE
TOTEXP	EXPENSE
OPINCOME	INCOME
INTEREST	INCOME
TRANS	INCOME
PRETAX	INCOME
TAXES	EXPENSE
NETINCOME	INCOME

- A. 1,800
- B. 2,000
- C. 2,500
- D. 3,200

Answer: B

Question: 143

Click the Exhibit button.

In DYNVIEWACCTS formula
 $\#GROSSMARGINPERCENT = (\#GROSSMARGIN / \#SALES) * 100$, what will
 GROSSMARGINPERCENT equal in February on a periodic and YTD basis?

	<u>TYPE</u>	<u>SCALE</u>	<u>CONSOL</u>	<u>DYNAMIC VIEW</u>
Sales	INCOME	X	X	
GrossMargin	INCOME	X	X	
GrossMarginPCT	BALANCE	X		X

The following data is loaded on a periodic basis:

	<u>JAN</u>	<u>FEB</u>	<u>MAR</u>
Sales	1,000	1,500	1,750
GrossMargin	750	1,200	1,000

- A. 35 and 44
- B. 75 and 80
- C. 80 and 48
- D. 80 and 78

Answer: D

Question: 144

Click the Exhibit button. Given the REPORT.SCH file in the exhibit, which point-of-view can be used within Hyperion Schedules? (Choose two.)

```
[VALIDKEYS]
ENTITY=LFI, GTS, GFR
ACCOUNT=SALES, COS, SALARY, CONSULTINGFEES

[POVBAR]
CATEGORY=OFF
PERIOD=OFF
FREQUENCY=OFF
CURRENCY=OFF

[DIMENSIONS]
DIM1=CATEGORY
DIM2=ENTITY
DIM3=FREQUENCY
DIM4=ACCOUNT
DIM5=PERIOD
```

- A. Account=SALARY
- B. Entity=GTS, Account=GROSSSALES
- C. Entity=LFI, Account=CONSULTINGFEES
- D. Entity=GTS, Account=GROSSSALES, Category=ACTUAL

Answer: A, C

Question: 145

In Enterprise, if users cannot extract journals, which journal items can be sent to headquarters via site management?

- A. Journal data residing in the database
- B. Journal debits, credits, and description
- C. All journal detail except for creation and post dates
- D. No journal information or data residing in the database

Answer: A

Question: 146

After running an allocation, what happens to the data from the allocation source?

- A. It is posted.
- B. It is removed.
- C. It is not removed.
- D. It is reduced by the allocation.

Answer: C

Question: 147

Which file contains the information about the server and its settings?

- A. HSvrCtrl.dat
- B. XASvrCtl.dat
- C. HYPENT.SVR
- D. Application.SVR

Answer: A

Question: 148

Excluding sending keystrokes, which tasks can be performed via AutoPilot?
(Choose three.)

- A. Printing a book
- B. Posting journals
- C. Consolidating data
- D. Writing to a specific file
- E. Running intercompany matching report

Answer: A, C, D

SAMPLE QUESTIONS



*These questions are for demo purpose only. **Full version** is up to date and contains actual questions and answers.*

Killexams.com is an online platform that offers a wide range of services related to certification exam preparation. The platform provides actual questions, exam dumps, and practice tests to help individuals prepare for various certification exams with confidence. Here are some key features and services offered by Killexams.com:



Actual Exam Questions: *Killexams.com provides actual exam questions that are experienced in test centers. These questions are updated regularly to ensure they are up-to-date and relevant to the latest exam syllabus. By studying these actual questions, candidates can familiarize themselves with the content and format of the real exam.*

Exam Dumps: *Killexams.com offers exam dumps in PDF format. These dumps contain a comprehensive collection of questions and answers that cover the exam topics. By using these dumps, candidates can enhance their knowledge and improve their chances of success in the certification exam.*

Practice Tests: *Killexams.com provides practice tests through their desktop VCE exam simulator and online test engine. These practice tests simulate the real exam environment and help candidates assess their readiness for the actual exam. The practice tests cover a wide range of questions and enable candidates to identify their strengths and weaknesses.*

Guaranteed Success: *Killexams.com offers a success guarantee with their exam dumps. They claim that by using their materials, candidates will pass their exams on the first attempt or they will refund the purchase price. This guarantee provides assurance and confidence to individuals preparing for certification exams.*

Updated Content: *Killexams.com regularly updates its question bank and exam dumps to ensure that they are current and reflect the latest changes in the exam syllabus. This helps candidates stay up-to-date with the exam content and increases their chances of success.*

Technical Support: *Killexams.com provides free 24x7 technical support to assist candidates with any queries or issues they may encounter while using their services. Their certified experts are available to provide guidance and help candidates throughout their exam preparation journey.*

For More exams visit <https://killexams.com/vendors-exam-list>
Kill your exam at First Attempt....Guaranteed!