



*Up-to-date Questions and Answers from authentic resources to improve knowledge and pass the exam at very first attempt. ----- Guaranteed.*



ASCP-MLT Dumps  
ASCP-MLT Braindumps  
ASCP-MLT Real Questions  
ASCP-MLT Practice Test  
ASCP-MLT Actual Questions



[killexams.com](https://killexams.com)

**ASCP**

**ASCP-MLT**

*Medical Laboratory Technician - MLT (ASCP)*

ORDER FULL VERSION

<https://killexams.com/pass4sure/exam-detail/ASCP-MLT>



### Question: 105

Class C fires involve:

Question options:

- A. grease or oil
- B. electrical equipment
- C. wood
- D. flammable materials

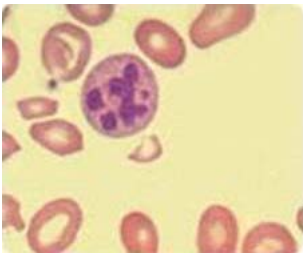
**Answer: B**

### Question: 106

The intended response is Vitamin B12 and folate deficiencies. Each of these conditions lead to a megaloblastic production of the red blood cells in the bone marrow. Since vitamin B12 and folate are needed in order to produce a synchronous development of the nucleus with the cytoplasm in hematologic cells, oval-macrocytosis often occurs if these nutrients are not in adequate supply within the body. This can also affect neutrophils, allowing for the characteristic hypersegmented nucleus.

The photographic field contains several oval-macrocytes and a hypersegmented neutrophil with greater than 5 nuclear segments. Oval macrocytes are most commonly associated with pernicious anemia and malabsorption syndromes leading to vitamin B12 and folic acid deficiencies.

Clinical information relating to chronic infection, aplastic anemia, and other hematologic malignancies provide the context for the presence of the oval macrocyte.



Macrocytic erythrocytes and hypersegmented neutrophils are not present in thalassemias or in Pelger-Huet anomaly (hypo-segmented neutrophils).

Conditions suggested by the macrocytes and the neutrophil in the photograph to the right

include which of the following?

- A. Thalassemia
- B. Vitamin B12 deficiency
- C. Pelger-Huet anomaly

D. Folate deficiency

**Answer:** B,D

**Question:** 107

hs-CRP is a more sensitive version of the C-reactive protein (CRP) test, a test that has been used for many years to assess inflammation in settings such as lupus, transplantation, infection, etc.

Which of the following cardiovascular risk markers is a more sensitive version of a test that is used to assess inflammation?

- A. Oxidized-LDL
- B. hs-CRP
- C. ApoB/ApoA1
- D. LpPLA2

**Answer:** B

**Question:** 108

Which of the procedures listed below will increase the platelet concentration in the preparation of Platelets?

- A. Centrifuge the blood at a low speed, remove the plasma and spin the plasma again at a low speed.
- B. Centrifuge the blood at a low speed, remove the plasma and spin the plasma again at a high speed.
- C. Centrifuge the blood at a high speed, remove the plasma and spin the plasma again at a high speed.
- D. Increase the duration of rotation

**Answer:** C

**Question:** 109

The production of long, tapered phialides is one of the key identifying features of *Trichoderma* species. In contrast, *Penicillium* species, produce phialides with blunt ends.



The phialides of *Beauveria* species are geniculate, forming a zig-zag pattern.

The arrows in the image on the right point to single, long, tapered phialides that extend laterally from either side of the hyphae. This is an identifying feature of which of the fungi listed below?

- A. *Trichoderma* species
- B. *Penicillium* species

C. Beauveria species

**Answer: A**

**Question: 110**

HbsAg is positive in acute and chronic Hepatitis B infections, since the antigen is found on the actual surface of the virus. HbeAg is present in the blood when the hepatitis B viruses are replicating, indicating an active infection. Anti-Hbc IgM is present due to the immune response to the presence of the hepatitis core antigen and indicates an acute infection. Anti-HBs is generally interpreted as indicating recovery and immunity from hepatitis B virus infection, according to the CDC.

Given the following results, what is the immune status of the patient?

HbsAg: positive

HbeAg: positive

Anti-HBc IgM: positive

Anti-HBs: negative

- A. acute infection
- B. chronic infection
- C. immunization
- D. susceptible

**Answer: A**

**Question: 111**

Each of the drugs/drug classes listed above have been known to cause drug-induced hemolytic anemia, although cephalosporins are the MOST COMMON cause. Cephalosporins can cause drug-induced hemolytic anemia when a patient produces antibodies to the particular cephalosporin drug in the presence of red blood cells. The drugs can alter the membrane appearance of the red blood cells, causing the body to mistake them as foreign. Complement becomes activated due to these antibodies; red cells are then destroyed causing hemolytic anemia. Dark urine, caused by intravascular hemolysis, is one of the most common symptoms associated with this condition.

Which one of the following drugs/drug classes is the MOST COMMON cause of drug-induced hemolytic anemia?

- A. Levodopa
- B. Quinidine
- C. Cephalosporins
- D. Levofloxacin
- E. Nonsteroidal anti-inflammatory drugs (NSAIDs)

**Answer: C**

**Question: 112**

The tube of choice for trace metal analysis is:

- A. red
- B. royal blue
- C. gold
- D. light blue

**Answer:** B

**Question: 113**

Acute hemolytic transfusion reactions are most commonly due to ABO-incompatible blood being transfused to a recipient with naturally occurring ABO alloantibodies (anti-A, anti-B, anti A,B).

Acute intravascular hemolysis as the result of a blood transfusion is most often associated with which of the following causes?

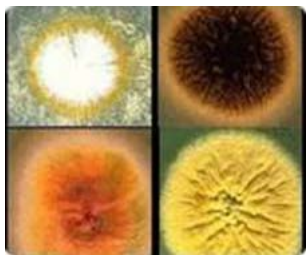
- A. Transfusion of ABO incompatible red cells
- B. Allergies
- C. Passively transfused antibodies to HLA antigens
- D. Transfusion-associated graft-versus-host disease

**Answer:** A

**Question: 114**

Lower right image

Chains of large, lemon-shaped annelloconidia



- A. *Aspergillus niger*
- B. *Microsporum canis*
- C. *Scopulariopsis* species
- D. *Acremonium* species

**Answer:** A,B,C,D

**Question: 115**

Only non-self antigens can be immunogenic. Self antigens are normally recognized by the immune system as part of the host, so an immune response does not normally occur. Non-self antigens are immunogenic since they have the potential to cause an immune response.

For a substance to be immunogenic it must be:

- A. A linear molecule
- B. A lipid
- C. Less than 5,000 molecular weight
- D. Recognized as non-self
- E. A haptene

**Answer:** D

### Question: 116

Gating sets up boundaries around a subset of data points to segregate those events for analysis.

Gating the proper cell population is crucial for flow cytometric analysis. The CD marker information presented on the histogram data is only representative of the cells inside the gate.

When analyzing the raw data of a sample on the flow cytometer, CD marker information on the histograms represents data inside the \_\_\_\_\_ population.

- A. Gated
- B. Non-gated

**Answer:** A

# SAMPLE QUESTIONS



*These questions are for demo purpose only. **Full version** is up to date and contains actual questions and answers.*

*Killexams.com is an online platform that offers a wide range of services related to certification exam preparation. The platform provides actual questions, exam dumps, and practice tests to help individuals prepare for various certification exams with confidence. Here are some key features and services offered by Killexams.com:*



**Actual Exam Questions:** *Killexams.com provides actual exam questions that are experienced in test centers. These questions are updated regularly to ensure they are up-to-date and relevant to the latest exam syllabus. By studying these actual questions, candidates can familiarize themselves with the content and format of the real exam.*

**Exam Dumps:** *Killexams.com offers exam dumps in PDF format. These dumps contain a comprehensive collection of questions and answers that cover the exam topics. By using these dumps, candidates can enhance their knowledge and improve their chances of success in the certification exam.*

**Practice Tests:** *Killexams.com provides practice tests through their desktop VCE exam simulator and online test engine. These practice tests simulate the real exam environment and help candidates assess their readiness for the actual exam. The practice tests cover a wide range of questions and enable candidates to identify their strengths and weaknesses.*

**Guaranteed Success:** *Killexams.com offers a success guarantee with their exam dumps. They claim that by using their materials, candidates will pass their exams on the first attempt or they will refund the purchase price. This guarantee provides assurance and confidence to individuals preparing for certification exams.*

**Updated Content:** *Killexams.com regularly updates its question bank and exam dumps to ensure that they are current and reflect the latest changes in the exam syllabus. This helps candidates stay up-to-date with the exam content and increases their chances of success.*

**Technical Support:** *Killexams.com provides free 24x7 technical support to assist candidates with any queries or issues they may encounter while using their services. Their certified experts are available to provide guidance and help candidates throughout their exam preparation journey.*

For More exams visit <https://killexams.com/vendors-exam-list>  
*Kill your exam at First Attempt....Guaranteed!*